

UNIFORM & DRESS CODE

We expect all students to wear uniform when attending school, or when participating in a school-organised event outside normal school hours. Our policy regarding uniform is based upon the principle that it:

- promotes a sense of pride in the academy;
- promotes a sense of community and belonging towards the academy;
- is practical and smart;
- identifies the students with the academy;
- is fair and makes students feel equal to their peers in terms of appearance and reduces peer pressure to dress in 'designer' fashions;
- is regarded as suitable wear for school and good value for money by most parents/carers;
- can assist identification of strangers on school premises.

All students are required to wear:

- Black academy logo blazer
- Academy year-coloured tie
- Traditional white shirt with a collar
- Plain black smart trousers (Wide leg, Straight leg, Tapered, Tailored or Flare are acceptable)
- Black V-neck jumper (optional)
- Flat plain black school shoes, with black socks. Trainers of all descriptions are expressly forbidden.
- If you wear a headscarf or headband, it must also be plain black.

For PE days, all students are required to wear:

- Dark Grey Academy logo PE T-Shirt
- Black Academy logo PE quarter zip top (optional)
- Plain black tracksuit bottoms/sports leggings or plain black shorts
- Trainers

All pupils should arrive to school in full uniform and then change into PE kit if they have PE during period 1

Combat trouser-style joggers with thigh pockets are not acceptable to wear for PE.

Below are examples of students wearing excellent school uniform:



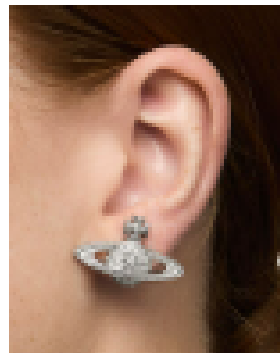
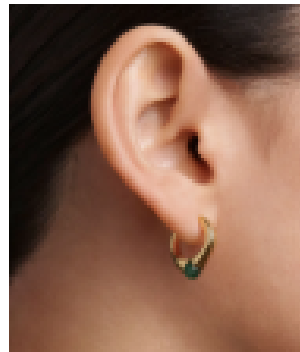
Jewellery and Hairstyles

We will ask students to remove make-up that we think is excessive including false eyelashes or nails.

Hair should be worn in a simple, neat style of natural colour (no unnatural colours or combinations e.g. blue, green, etc). Students should not have hair or eyebrow shavings or inappropriate headwear.

JEWELLERY POLICY

- Pupils are permitted to wear a single pair of stud earrings. These must not hang below the bottom of the ear.
- Large earrings that hang below the ear, bars or hoops are not permitted, as shown in the images below.
- No other jewellery is permitted to be worn for school including bracelets, chains, rings or facial piercings
- Any non-regulation jewellery will be confiscated and returned at the end of each half term, unless a parent/carer comes to collect it.
- Refusing to remove jewellery will result in a C2, a placement in Reset and a parent/carer coming to school to remove the jewellery and hand it over as per this policy.



Examples of Appropriate school shoes

Examples of Inappropriate school shoes



Where to buy our uniform

The majority of uniform items can be bought at supermarkets or high-street shops. However, the academy blazer, tie and polo top can only be bought from our approved supplier.

Whittakers

123-125 Chorley Road

Swinton

Manchester

Greater Manchester

M27 4AA

0161 794 1396

www.whittakersschoolwear.co.uk

Other essential equipment

All students will need

- pen - black and red
- pencil;
- ruler;

- rubber;
- scientific calculator;
- pencil case;
- suitable bag with the capacity to hold A4 books.

Prohibited items

Students are required to keep mobile devices and wireless headphones in bags until they are offsite.