

UNIFORM & DRESS CODE

We expect all students to wear uniform when attending school, or when participating in a school-organised event outside normal school hours. Our policy regarding uniform is based upon the principle that it:

- is fair and makes students feel equal to their peers in terms of appearance and reduces peer pressure to dress in 'designer' fashions;
- promotes a sense of community and belonging towards the academy;
- promotes a sense of pride in the academy;
- is practical and smart;
- identifies the students with the academy;
- is regarded as suitable wear for school and good value for money by most parents/carers;
- can assist identification of strangers on school premises.

All students are required to wear:

- Black Academy logo blazer (compulsory)
- Academy logo year-coloured tie (compulsory)
- Traditional white shirt with a collar
- Plain black smart trousers (Wide leg, Straight leg, Tapered, Tailored or Flare style are acceptable but trousers must be smart trousers - lycra, leggings or stretchy material are not acceptable)
- Black V-neck jumper (optional)
- Flat plain black school shoes, with black socks or plain black leather trainers that can be polished. Examples of acceptable trainers can be found below.
- If you wear a headscarf or headband, it must also be plain black.

For PE **days**, all students are required to wear:

- Dark grey Academy logo PE T-Shirt (compulsory)
- Black Academy logo PE quarter zip top (optional)
- Plain black tracksuit bottoms/sports leggings or plain black shorts
- Trainers

All pupils should arrive to school in full uniform and then change into PE

kit if they have PE during period 1.

Only Academy logo tops are acceptable for PE. Combat trouser-style joggers with thigh pockets are not acceptable to wear for PE.

Below are examples of students wearing excellent school uniform:



Yondr pouches

All pupils will be issued with a Yondr phone pouch free of charge. They are responsible for bringing this to school each day to 'pouch up' - put their phone away for the day.

Failing to bring their pouch means a pupil's phone will be confiscated until 3pm. Losing, damaging or graffiti on the pouch will incur a £20 cost to purchase a replacement.

Pupils are not permitted to wear smart watches in school, such as apple watches. These must be left at home or put inside Yondr pouches when pupils 'pouch up' on their way into school each morning.



Jewellery and Hairstyles

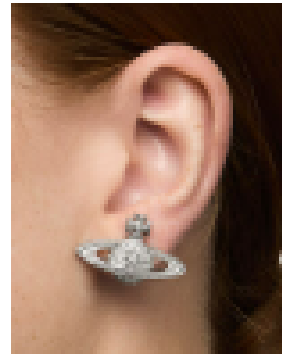
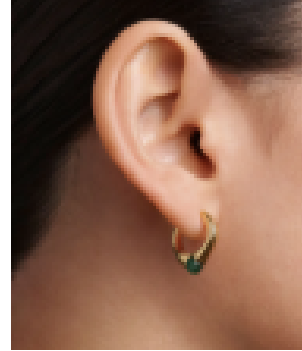
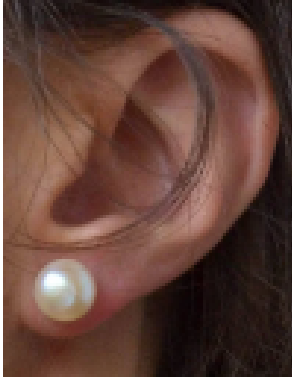
We will ask students to remove make-up that we think is excessive including false eyelashes or nails.

Hair should be worn in a simple, neat style of natural colour (no unnatural colours or combinations e.g. blue, green, etc). Students should not have hair or eyebrow shavings or inappropriate headwear.

JEWELLERY POLICY

- Pupils are permitted to wear a single pair of stud earrings. These must not hang below the bottom of the ear.
- Large earrings that hang below the ear, bars or hoops are not permitted, as shown in the images below.
- No other jewellery is permitted to be worn for school including bracelets, chains, rings or facial piercings
- Any non-regulation jewellery will be confiscated and returned at the end of each half term, unless a parent/carer comes to collect it.

- Refusing to remove jewellery will result in a C2, a placement in Reset and a parent/carer coming to school to remove the jewellery and hand it over as per this policy.



All of the following are examples of acceptable shoes for school - the next pages gives examples of inappropriate shoes. The rule of thumb should be 'can the shoes be polished black'?



The following are not appropriate shoes for school (they are NOT completely plain black leather or leather-effect)



Where to buy our uniform

The majority of uniform items can be bought at supermarkets or high-street shops. However, the academy blazer, tie, PE polo top and PE quarter-zip can only be bought from our approved supplier.

Whittakers

123-125 Chorley Road

Swinton

Manchester

Greater Manchester

M27 4AA

0161 794 1396

www.whittakersschoolwear.co.uk

Other essential equipment

All students will need

- pen - black and red
- pencil;
- ruler;
- rubber;
- scientific calculator;
- pencil case;
- suitable bag with the capacity to hold A4 books.